



MID LIGHTING

Education Edition



- A competitive, interchangeable and architectural LED downlight system

- Available in 6, 9 & 13 watts

- Lumen outputs ranging from 650 - 1150lm

- 3 year warranty

- Colour Temperatures: 2700k - 3000k - 4000k

- Beam Angles: 22°/ 36°/ 60°

- White as standard, Black and Grey also available

- Available with Dimming (MAINS/1-10V/SDIM/DALI)

- Available with Emergency (ME3/-ST/-PRO)

- Materials:

Aluminium Housing

Polycarbonate reflector with aluminium coating

Aluminium attachments

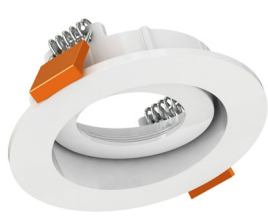
- Dimensions:

Ø50mm Bezel x 48mm(6w)

Ø50mm Bezel x 78mm(9 & 13w)

Reference Number	Wattage	Lumen Output (lm)	Colour Temperature			LED Driver		Beam Angle			Emergency Options		
			2700k (827)	3000k (830)	4000k (840)	STD	DALI	22D	36D	60D	ME3	ME3-ST	ME3-PRO
MID/ILS/6W	6W	650	•	•	•	•	•	•	•	•	•	•	•
MID/ILS/9W	9W	900	•	•	•	•	•	•	•	•	•	•	•
MID/ILS/13W	13W	1150	•	•	•	•	•	•	•	•	•	•	•

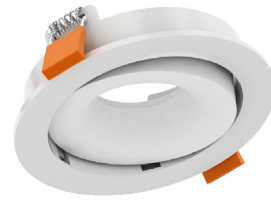
ILS DOWNLIGHTS



- A1**
- Adjustable
 - Offset from bezel



- A5**
- Adjustable
 - Low profile



- A6**
- Adjustable
 - 355° Rotation



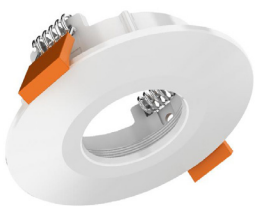
- D1**
- Adjustable
 - 355° Rotation
 - Highly Specular reflector



- D2**
- Square
 - Adjustable
 - 355° Rotation
 - Highly Specular reflector



- D3**
- Fixed
 - Highly Specular Reflector



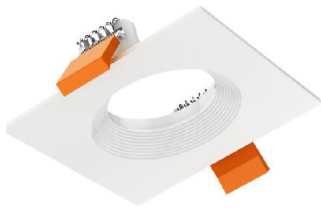
- F4**
- Fixed
 - Rated IP65



- F6**
- Fixed
 - Shallow



- R1**
- Fixed
 - Deep



- S5**
- Square
 - Fixed



- S6**
- Square
 - Adjustable
 - 355° Rotation



MBNA Thames Clipper



280 High Holborn - Gilead Sciences



Ten Watchmoor Park



PEW Offices



- E3



- E4

**- A high quality, cost effective LED downlight
with a shallow profile and IP rating up to IP65**

- The E3 & E4 (830/840) are stock options. The higher lumen E6 & E8 are to order.

- 10-57w options providing lumen outputs from 720 - 4800lm
- 5 year warranty
- Colour Temperatures: 2700k - 3000k - 4000k - 6000k
 - Die cast aluminium body
 - Available with Dimming (SDIM/DALI)
 - Available with Emergency (ME3/-ST/-PRO)
- Bezel: White as standard. Black/Grey can also be specified
 - Reflector Options
 - Highly Specular: 40° beam angle (IP65)
 - Satin Etched: 60° beam angle (IP40)
 - Opal: 80° beam angle (IP65)

- Dimensions:
 - E3: Ø100mm x 67mm
 - E4: Ø147mm x 80mm
 - E6: Ø208mm x 92mm
 - E8: Ø230mm x 102mm

Reference Number	Shape		Wattage			Colour Temperature			LED Driver		Beam Angle			Bezel Colour		Emergency Options		
	SQ	C	6W	9W	13W	2700K (827)	3000K (830)	4000K (840)	STD	DALI	22°	36°	60°	WH	BK	ME3	ME3-ST	ME3-PRO
MID/QUAD1/LED	•	•	•	•	•	•	•	•	•	•	•	•	•	•	•	•	•	•
MID/QUAD2/LED	•	•	•	•	•	•	•	•	•	•	•	•	•	•	•	•	•	•
MID/QUAD3/LED	•	•	•	•	•	•	•	•	•	•	•	•	•	•	•	•	•	•
MID/QUAD4/LED	•	•	•	•	•	•	•	•	•	•	•	•	•	•	•	•	•	•

APOLLO DOWNLIGHTS



- G6



- G7

- A cost effective, high quality LED downlight with a range of interchangeable diffusers and reflectors

- The G6 & G7 (830/840) are stock options. Other options available to order

- 16-42w options providing lumen outputs from 1000- 3100lm

- 3 year warranty

- Colour Temperatures: 2700k - 3000k - 4000k - 6000k

- Die cast aluminium body

- Available with Dimming (SDIM/DALI)

- Available in Emergency (ME3/-ST/-PRO)

- Diffuser Options: Clear Glass/ Opal

- Reflector Options: Silver/ Black/ White

- Dimensions:

G5: Ø155mm x 111mm

G6: Ø180mm x 111mm

G7: Ø200mm x 135mm

G8: Ø230mm x 143mm

Reference Number	cW	Lumen Output	Colour Temperature		LED Driver		Beam Angle	Reflector Options		Emergency Options		
			3000k (830)	4000k (840)	STD	DALI		(HS)	(SE)	ME3	ME3-ST	ME3-PRO
MID/TTN/E3	10W	720	/	.	.	.	60D	/
MID/TTN/E4	22W	1500	.	/	.	.	40D	.	/	.	.	.
		1600	/	

MID200 DOWNLIGHTS



- A high quality LED downlight providing flexibility through interchangeable decorative and IP rated attachments

- Available in LED or Fluorescent

- LED module providing lumen outputs from 1000 - 5000lm

- 5 year system warranty for LED

- Colour Temperatures: 3000k - 4000k

- Fluorescent: 1x13 - 42w CF

2x13 - 26w CF

- Available with Dimming (DSI/SDIM/DALI)

- Available with Emergency (LEM/-ST/-PRO)

- Bezel Options: White/ Chrome/ Brushed Aluminium

- Reflector Options

LED: Satin Etched/ Faceted/ Dot Matrix

CF: Satin Etched/ Diamond Faceted/ Vertical Facet

- Dimensions:

Ø195mm bezel x 134mm (LED)

Ø195mm bezel x 105/145mm (CF)

Reference Number	Colour Temperature		LED Driver			Bezel Options			Reflector Options			Emergency Options		
	3000k (830)	4000k (840)	STD	SDIM	DALI	WH	CH	BA	FR	SE	DM	LEM	LEM-ST	LEM-PRO
MID/200/LED/1100lm	•	•	•	•	•	•	•	•	•	•	•	•	•	•
MID/200/LED/2000lm	•	•	•	•	•	•	•	•	•	•	•	•	•	•
MID/200/LED/3000lm	•	•	•	•	•	•	•	•	•	•	•	•	•	•

MID200 DOWNLIGHTS



Brunel University



Arcadia Academy



Claremont Primary School



Mittal Steel



Quadrant House



St Paul's Academy

WAFER DOWNLIGHTS



- **An architectural, ultra shallow LED solution**

- Surface Mount or Recessed; ideal for restricted ceiling heights and voids

- Available in 8, 11, 15, 22 & 30 watts

- Lumen outputs ranging from 537 - 2174lm

Circular: 537/827/1118/1566/1997 lumens

Square: 461/982/1656/2174 lumens

- Shallow Depth: 19mm Recessed/ 39mm Surface

- Colour Temperatures: 3000k - 4000k - 6500k

- Bezel Options: White or Silver

- Available with Dimming (1-10V/DALI)

- Available with remote Emergency (RME3/-ST/-PRO)

- Aluminium bezel and heat sink

Reference Number	Dimensions (mm)	Lumen Output (lm)	Colour Temperature			LED Driver			Bezel Options		Remote Emergency Options		
			3000K (830)	4000K (840)	6500K (865)	STD	1-10V	DALI	WH	SLV	RME3	RME3-ST	RME3-PRO
MIS/WAF/C/8W/	Ø117	537	•	•	•	•	•	•	•	•	•	•	
MIS/WAF/C/11W/	Ø180	827	•	•	•	•	•	•	•	•	•	•	
MIS/WAF/C/15W/	Ø240	1118	•	•	•	•	•	•	•	•	•	•	
MIS/WAF/C/22W/	Ø240	1566	•	•	•	•	•	•	•	•	•	•	
MIS/WAF/C/30W/	Ø300	1997	•	•	•	•	•	•	•	•	•	•	
MIS/WAF/SQ/8W/	108 ²	461	•	•	•	•	•	•	•	•	•	•	
MIS/WAF/SQ/15W/	168 ²	982	•	•	•	•	•	•	•	•	•	•	
MIS/WAF/SQ/22W/	220 ²	1656	•	•	•	•	•	•	•	•	•	•	
MIS/WAF/SQ/30W/	300 ²	2174	•	•	•	•	•	•	•	•	•	•	

WAFER DOWNLIGHTS



Stockley Park - Mitsubishi Heavy Industries



MBNA Thames Clipper



MBNA Thames Clipper



- A competitively priced LED tape and extrusion system

- Available with a variety of aluminium extrusion

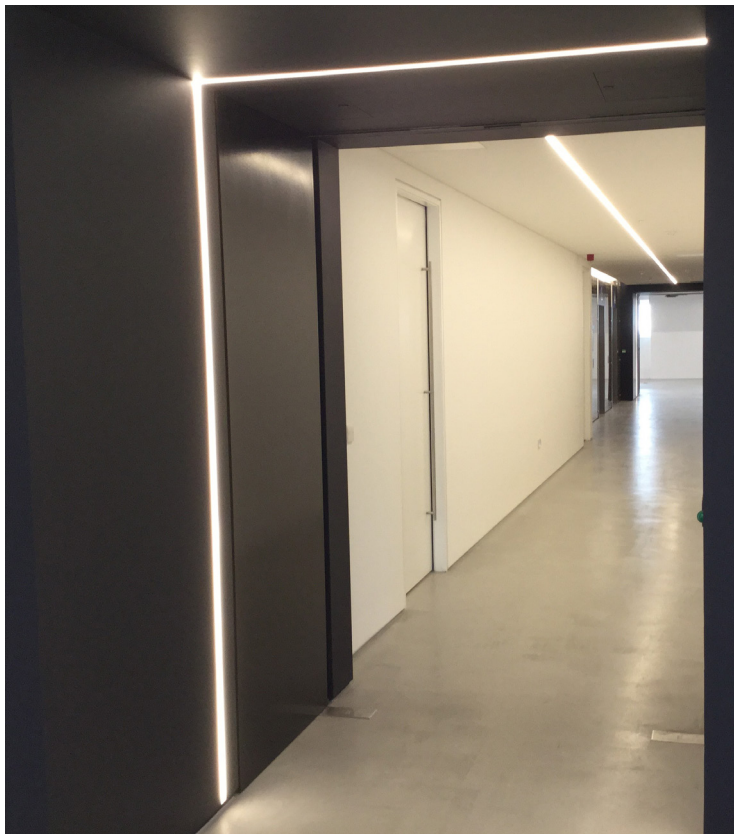
- 120 LEDs per Metre
- 9.6 Watts/Metre
- Colour Temperatures: 3000k - 4000k - RGB
- Opal Diffuser
- End Caps and Mounting Clips available to order
 - Available in IP67
 - Available with Dimming (DALI)
 - Other Diffusers & Extrusions available
- 60 & 200 LEDs per Metre tape also available
- Drivers: 20w - 35w - 60w - 100w - 150w

- Extrusion dimensions:
 - 17 x 8mm (S)
 - 35 x 35mm (B)

Reference Number	Length	Colour Temperature		LED Driver		Extrusion		Diffuser
		3000k (830)	4000k (840)	STD	DALI	(LEX/S)	(LEX/B)	
MI/FLEXLED/120	_m	•	•	•	•	•	•	•
MI/FLEXLED/120/IP67		•	•	•	•	•	•	•



Croydon College



180 Oxford Street - UK House



Croydon College



280 High Holborn - Gilead Sciences

PREMLED RECESSED



**- A high quality and efficient LED modular luminaire
ideally suited for open plan environments and classrooms**

- Part L compliant with an efficacy of 118 L.lm/cW

- Tridonic QLE boards providing lumen outputs from 5000 - 6125lm

- 5 year system warranty for LED

- Colour Temperatures: 3000k - 4000k - Tunable White (TWH)

- Efficacy: 118 L.lm/cW

- Available with Dimming (1-10V/SDIM/DALI)

- Available with Emergency (ME3/-ST/-PRO)

- Suitable for Exposed Tee ceilings

- Spring Tee and other ceiling options also available

- Diffuser Options:

Polar White/ Microprism/ Dropped Dish

- Dimensions:

600 x 600mm

1200 x 300mm

1200 x 600mm

1500 x 300mm

Reference Number	Lumen Output (lm)	Colour Temperature			LED Driver		Diffuser Options		Remote Gear	Emergency Options		
		3000k (830)	4000k (840)	5000k (850)	STD	DALI	PW	MPO	(R)	ME3	ME3-ST	ME3-PRO
MIR/PREMLED/66	5000lm	•	•	•	•	•	•	•	•	•	•	•
MIR/PREMLED/123	5000lm	•	•	•	•	•	•	•	•	•	•	•
MIR/PREMLED/153	6250lm	•	•	•	•	•	•	•	•	•	•	•

PREMLED RECESSED



South Thames College (1200x300mm)



South Thames College (500x500mm)



Highams Park School



University of Hertfordshire



London House



Christ the Saviour Primary School (1200x600mm)



**- An economic ultra shallow LED luminaire
ideally suited for open plan environments and classrooms**

- Depth of only 8mm enables installation into extremely shallow ceiling void

- 40w LED providing a 3600 lumen output
- Edge lit creating an uniform illumination
 - 5 year guarantee
 - Colour Temperatures: 3000k - 4000k
 - Aluminium frame
 - Suitable for exposed tee ceiling
- Wire suspended or surface mounted options available
 - Available with Dimming (1-10V/SDIM/DALI)
 - Available in Emergency (ME3/-ST/-PRO)
 - Diffuser: Opal
 - Dimensions:
 - 594 x 594 x 8mm
 - 600 x 605 x 50mm (with surface mounting frame)

Reference Number	Wattage	Lumen Output (lm)	Colour Temperature		LED Driver			Remote Driver	Mounting Options		Emergency Option		
			3000K (830)	4000K (840)	STD	1-10v	DALI		R	WS	SM	ME3	ME3-ST
MIR/FLT/66	40w	3600lm
	54w	5600lm
MIR/FLT/123	40w	3600lm

FLATLINE RECESSED



Linx House



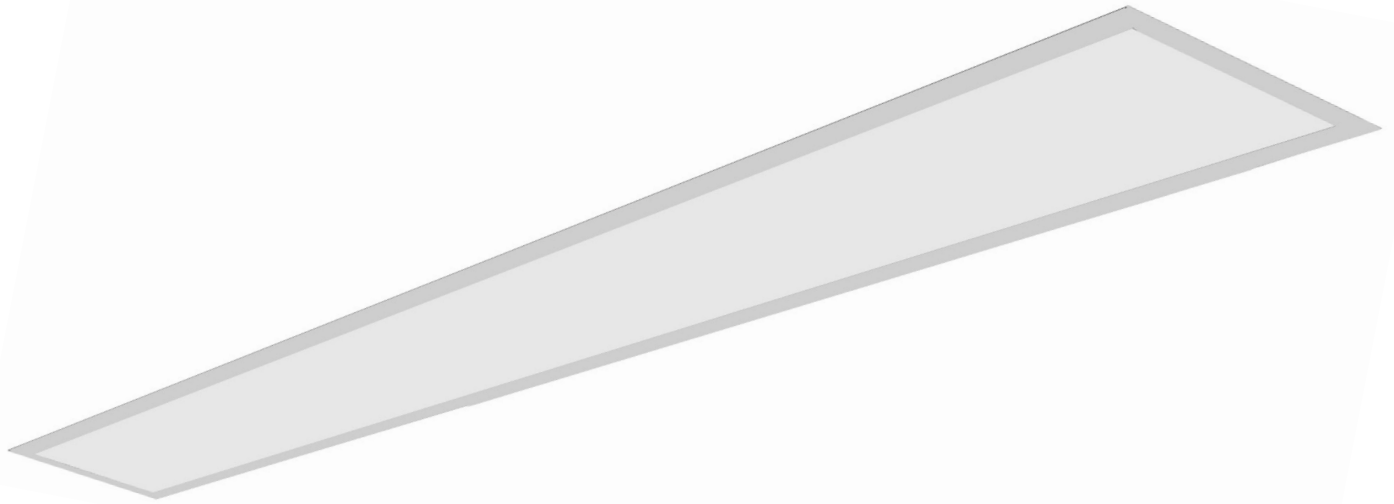
Linx House



Linx House



Uxbridge College



**- A high quality recessed extruded system
ideally suited for modular or continuous runs**

- Available in LED or Fluorescent

- Tridonic LLE boards providing lumen outputs from 2500-6250lm
 - 5 year system warranty for LED
 - Colour Temperatures: 3000k - 4000k - 5000k
- T5 Fluorescent: 1 & 2 lamp options in 14w - 24w - 35w - 49w - 54w
 - Body: Aluminium Extrusion
 - Body Options: Trim/Trimless
- White as standard, other RAL colours available
 - Available with Dimming (1-10V/SDIM/DALI)
 - Available in Emergency (ME3/-ST/-PRO)
 - Diffuser: Polar White/ Micro-Prismatic
- Available in continuous runs with aluminium infills

- Dimensions:

600 - 3600 x 100/114 x 110mm (LED)

600 - 3600 x 328/428 x 117mm (T5)

Reference Number	Length mm	Lumen Output (lm)	Colour Temperature			Driver Options			Diffuser Options		Trim Options		Emergency Options			
			3000k (830)	4000k (840)	5000k (850)	STD	SDIM	DALI	PW	MPO	T	P	ME3	ME3-ST	ME3-PRO	
MIR/ALULINE6/LED	570	2500	•	•	•	•	•	•	•	•	•	•	•	•	•	•
MIR/ALULINE9/LED	850	3750	•	•	•	•	•	•	•	•	•	•	•	•	•	•
MIR/ALULINE12/LED	1130	5000	•	•	•	•	•	•	•	•	•	•	•	•	•	•
MIR/ALULINE15/LED	1410	6250	•	•	•	•	•	•	•	•	•	•	•	•	•	•



Ten Watchmoor Park



Christ The Saviour Primary School

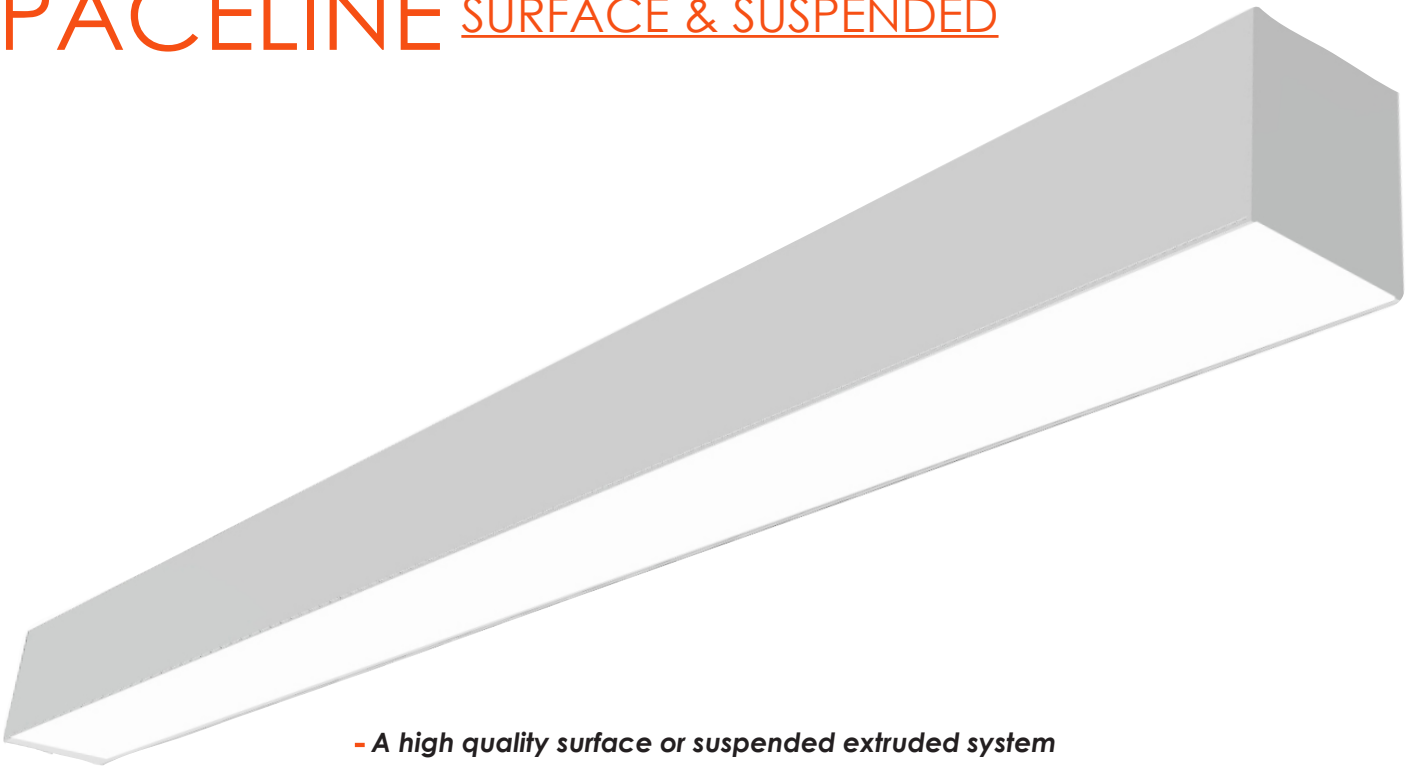


South Thames College



23 King Street, London

SPACELINE SURFACE & SUSPENDED



**- A high quality surface or suspended extruded system
ideally suited for modular or continuous runs**

- Available in LED or Fluorescent

- Tridonic LLE boards providing lumen outputs from 2500-6250lm
 - 5 year system warranty for LED
 - Colour Temperatures: 3000k - 4000k - 5000k
- T5 Fluorescent: 1 & 2 lamp options in 28w - 35w - 49w - 54w
 - Aluminium extruded body
- Painted White as standard, other RAL colours available
 - Diffuser Options: Micro- Prismatic/ Polar White
 - Uplight option also available to specify
 - Available with Dimming (1-10V/SDIM/DALI)
 - Available with Emergency (ME3/-ST/-PRO)
- Available in continuous runs with aluminium infills

- Dimensions:

600 - 3600 x 100 x 108.5mm (LED)

600 - 3600 x 100 x 108.5mm (T5)

Reference Number	Length mm	Lumen Output (lm)	Colour Temperature			Driver Options			Diffuser		Emergency Options		
			3000k (830)	4000k (840)	5000k (850)	STD	SDIM	DALI	PW	MPO	ME3	ME3-ST	ME3-PRO
MISPL 6/LED	570	2500lm	•	•	•	•	•	•	•	•	•	•	•
MISPL 9/LED	850	3750lm	•	•	•	•	•	•	•	•	•	•	•
MISPL 12/LED	1130	5000lm	•	•	•	•	•	•	•	•	•	•	•
MISPL 15/LED	1410	6250lm	•	•	•	•	•	•	•	•	•	•	•

For a wire suspended fitting please suffix part code with "WS"

SPACELINE SURFACE & SUSPENDED



The Link, Thameshead



AT Kearney

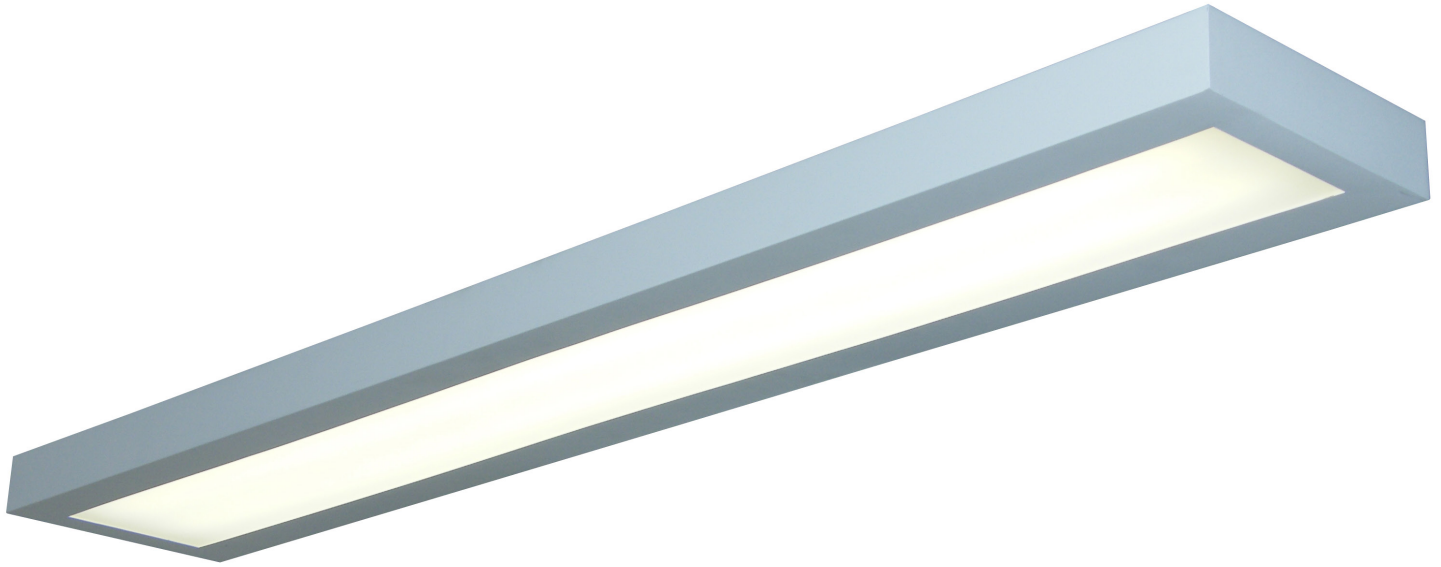


The Link, Thameshead



MBNA Thames Clipper

SPACE 2 SURFACE & SUSPENDED



- An architectural surface and suspended LED system with an uplight facility

- Available in LED or Fluorescent

- Tridonic LLE boards providing lumen outputs from 2600 - 8500lm

- 5 year system warranty for LED

- Manufactured from Steel

- Painted white as standard, other RAL colours available

- Colour Temperatures: 3000k - 4000k - 5000k

- T5 Fluorescent: 1 & 2 lamp options in 28w - 35w - 49w - 54w

- Available with Dimming (1-10V/SDIM/DALI)

- Available with Emergency (ME3/-ST/-PRO)

- Diffuser/Louvre Options:

LED: Polar White/Microprism

T5: Satin Wedge/ Specular Wedge/ Flat Cross Blade

- Available in continuous runs with aluminium infills

- Dimensions:

1275/1575 x 250 x 66mm (LED)

1279/1579 x 250 x 66mm (T5)

Reference Number	Size (mm)			Lumen Output (lm)	Colour Temperature		Driver Options		Diffuser Options		Emergency Options		
	L	W	D		3000k (830)	4000k (840)	STD	DALI	PW	MPO	ME3	ME3-ST	ME3-PRO
SPACE2/LED/12/2980	1275	250	66	2980	•	•	•	•	•	•	•	•	•
SPACE2/LED/12/3380				3380	•	•	•	•	•	•	•	•	•
SPACE2/LED/15/5850	1575	250	66	5850	•	•	•	•	•	•	•	•	•
SPACE2/LED/15/6800				6800	•	•	•	•	•	•	•	•	•

OTHER LUMEN PACKAGES AVAILABLE. PLEASE CONTACT OUR TECHNICAL DEPARTMENT

SPACE 2 SURFACE & SUSPENDED



Prospect College

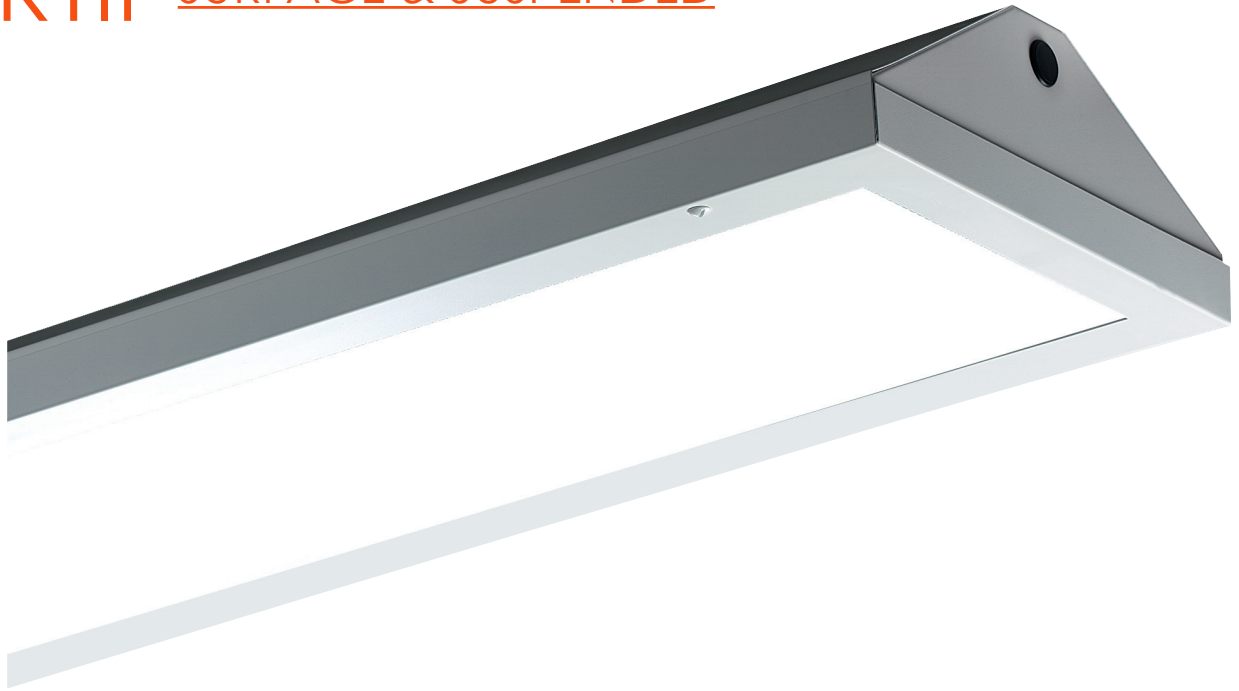


Goldsmiths College



Gateway Primary School

SPORTIF SURFACE & SUSPENDED



- A specifically designed LED system for sports halls

- Available in LED or Fluorescent

- Tridonic LLE boards providing lumen outputs from 13,000 - 31000lm

- 5 year system warranty for LED

- Colour Temperatures: 3000k - 4000k - 5000k

- T5 Fluorescent: 3/4/5/6 lamp options

- Available with Dimming (1-10V/SDIM/DALI)

- Available with Emergency (ME3/-ST/-PRO)

- Diffuser Options:

LED: Polar White

Fluorescent: Prismatic/ Wire Guard

- Dimensions:

1210 x 468 x 120mm (LED)

1254/1554 x 328/428 x 117mm (T5)

Reference Number	Size (mm)			Lumen Output (lm)	Driver (mA)		Colour Temperature		Emergency Options		
	L	W	D		250	350	3000k (B30)	4000k (B40)	ME3	ME3-ST	ME3-PRO
MIS/SPORTIF/LED/12/13000	1210	468	120	13000	•	/	•	•	•	•	•
MIS/SPORTIF/LED/12/31000				31000	/	•	•	•	•	•	

OTHER LUMEN PACKAGES AVAILABLE. PLEASE CONTACT OUR TECHNICAL DEPARTMENT

SPORTIF SURFACE & SUSPENDED



University of Hertfordshire



Uxbridge College



ST. George's C of E School



Highams Park School



Garth Hill College

MIS290 SURFACE & SUSPENDED



**- A high quality, low glare and general purpose luminaire
ideal for classrooms and corridors**

- Available in LED or Fluorescent

-
- Tridonic LLE boards providing lumen outputs from 2600-8500lm
 - 5 year system warranty for LED
 - Colour Temperatures: 3000k - 4000k - 5000k
 - T5 Fluorescent: 1 & 2 lamp options in 14w - 24w - 35w - 49w - 54w - 80w
 - Prismatic Diffuser
 - Steel body with polycarbonate end caps
 - Surface mounted or Wire suspended
 - Available with Dimming (1-10V/SDIM/DALI)
 - Available with Emergency (ME3/-ST/-PRO)

- Dimensions:

1200/1500 x 200 x 90mm (LED)

600/900/1200/1500/1550 x 200 x 90mm (T5)

Reference Number	Size (mm)			Lumen Output (lm)	LED Driver		Colour Temperature		Emergency Options		
	L	W	D		STD	DALI	3000k (830)	4000k (840)	ME3	ME3-ST	ME3-PRO
MIS290/LED/12/5000	1275	200	90	5000	•	•	•	•	•	•	•
MIS290/LED/15/6250	1575	200	90	6250	•	•	•	•	•	•	•

MIS290 SURFACE & SUSPENDED



Pitney Bowes



Gilmour House

MIS800 SURFACE & SUSPENDED



**- A general purpose surface LED luminaire
ideal for circulation areas**

- Available in LED or Fluorescent

- Tridonic CLE boards providing lumen outputs from 1350 - 4090lm

- 5 year system warranty for LED

- Colour Temperatures: 3000k - 4000k - 5000k

- Fluorescent: 28w - 38w 2D

22w - 55w T5c

1 x 26w - 2 x 36w CF

- Diffuser: Opal/ Prismatic (fluorescent only)

- Can also be wire suspended as a pendant

- Presence detector for corridor function available for circulation areas (CDR)

- Available with Dimming (1-10V/SDIM/DALI)

- Available with Emergency (ME3/-ST/-PRO)

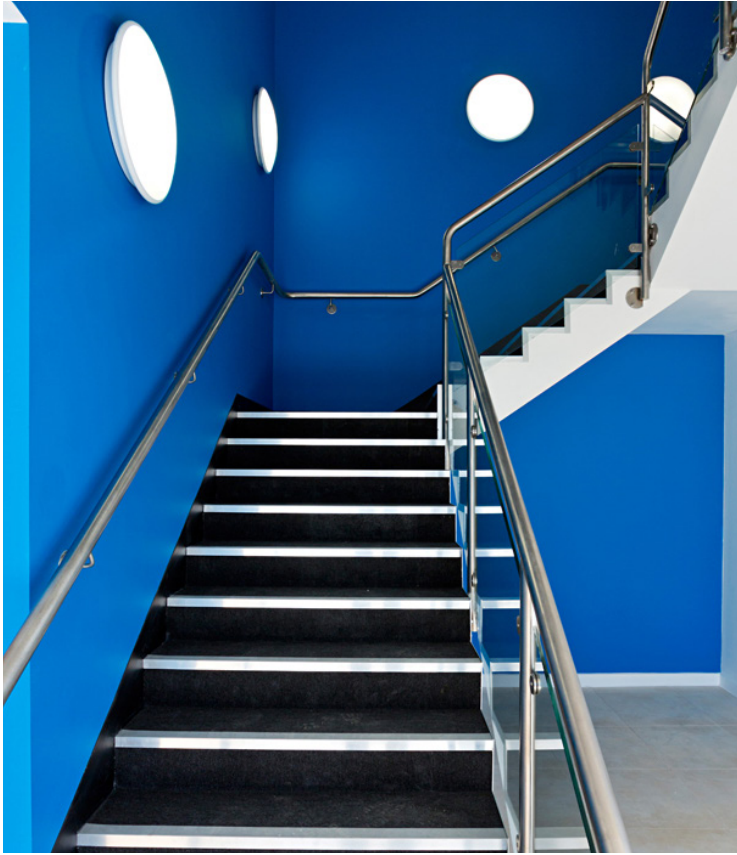
- Dimensions:

Ø425mm x 114mm (LED)

Ø325/425/525mm x 114mm (Fluorescent)

Reference Number	Lumen output lm	Colour Temperature		Driver Options				Diffuser OP	Emergency Option		
		(830) 3000K	(840) 4000k	STD	SDIM	DALI	CDR		ME3	ME3-ST	ME3-PRO
MIS800/LED/10W	1350	•	•	•	•	•	•	•	•	•	
MIS800/LED/14W	1950	•	•	•	•	•	•	•	•	•	
MIS800/LED/18W	2840	•	•	•	•	•	•	•	•	•	
MIS800/LED/29W	4090	•	•	•	•	•	•	•	•	•	

MIS800 SURFACE & SUSPENDED



Linx House



Uxbridge College



Norwich and Norfolk Hospital



**- A high quality cornice LED luminaire
ideally suited for circulation areas**

- Available in LED or Fluorescent

- Tridonic LLE boards providing lumen outputs from 1000-5000lm

- 5 year system warranty for LED

- Colour Temperatures: 3000k - 4000k - 5000k

- T5 Fluorescent: 14w - 24w - 35w - 49w - 54w - 80w

- Rated IP44

- Extruded aluminium body

- Diffuser: Opal Polycarbonate

- Injection moulded end caps

- Available with tamper proof screws

- Available with Dimming (1-10V/SDIM/DALI)

- Available with Emergency (ME3/-ST/-PRO)

- Dimensions:

300/600/900/1200/1500 x 121 x 63mm (LED)

600/900/1200 x 121 x 63mm(T5)

Reference Number	Size (mm)			Lumen Output (lm)	Colour Temperature		Control Gear Options			Integral Switching		Emergency Option		
	L	W	D		3000k (830)	4000k (840)	STD	SDIM	DALI	ISR	ISPC	ME3	ME3-ST	ME3-PRO
MIAPX/3/LED	300	121	63	1000	•	•	•	•	•	•	•	•	•	•
MIAPX/6/LED	600	121	63	2000	•	•	•	•	•	•	•	•	•	•
MIAPX/12/LED	1200	121	63	4000	•	•	•	•	•	•	•	•	•	•
MIAPX/15/LED	1500	121	63	5000	•	•	•	•	•	•	•	•	•	•



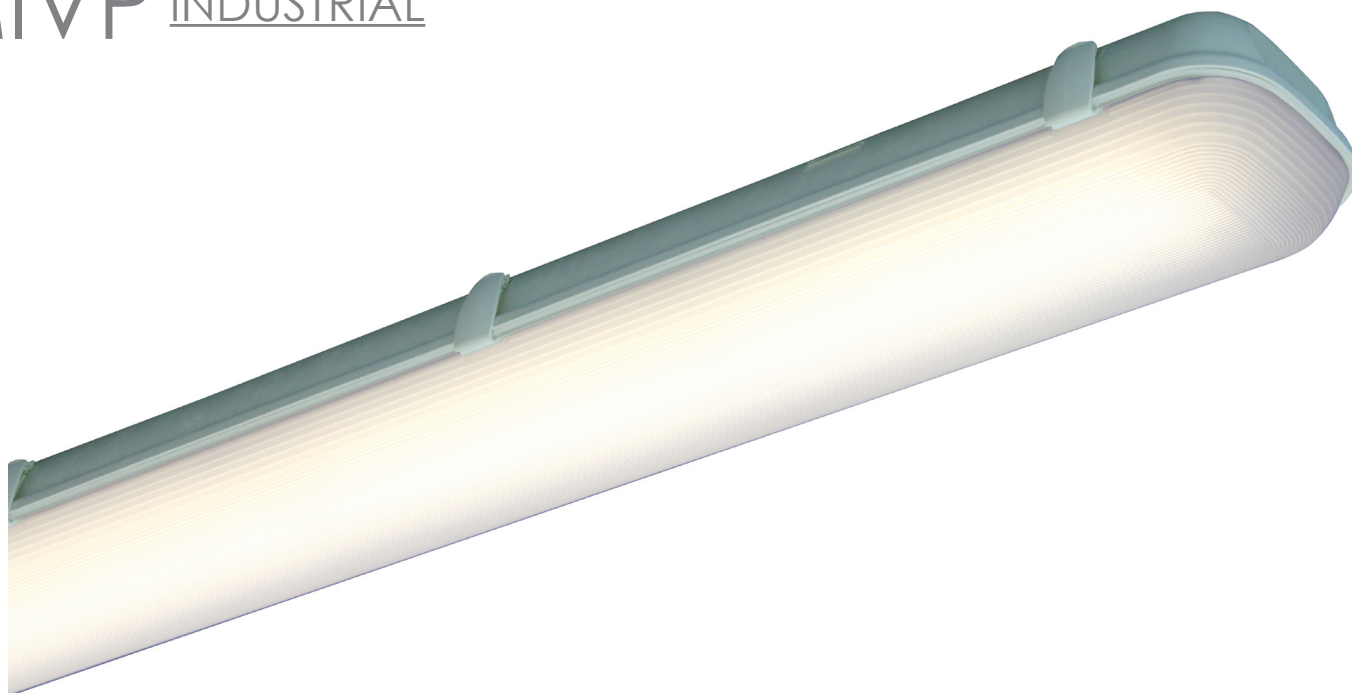
Highams Park School



Highams Park School



Highams Park School



**- A high quality, vapour proof luminaire
suitable for a range of general purpose applications**

- Available in LED or Fluorescent

- Tridonic LLE boards providing lumen outputs from 2500-7750lm
 - 5 year system warranty for LED
 - Colour Temperatures: 3000k - 4000k - 5000k
- T5 Fluorescent: 1 & 2 lamp options in 14w - 24w - 35w - 49w - 54w - 80w
 - T8 also available on request
- Available with Dimming (1-10V/SDIM/DALI)
- Available with Emergency (ME3/-ST/-PRO)
 - Rated IP65
- Glass- reinforced plastic (GRP) body
 - Opal Polycarbonate Diffuser

- Dimensions:

665/1275/1575 x 134 x 99mm (LED)

680/1280/1580 x 90/180 x 100/110mm (T5)

Reference Number	Nominal size length (mm)	Lumen Output lm	Driver Options			Additional Options	Colour Temperature			Emergency Option		
			STD	SDIM	DALI		SSSB	3000K (830)	4000K (840)	5000K (850)	ME3	ME3-ST
MIVP LED6/2500	665	2500lm	•	•	•	•	•	•	•			
MIVP LED12/5000	1275	5000lm	•	•	•	•	•	•	•	•	•	•
MIVP LED15/6250	1575	6250lm	•	•	•	•	•	•	•	•	•	•
MIVP LED15/7750	1575	7750lm	•	•	•	•	•	•	•	Please contact MID		



Davenies School



Garth Hill College



The Link, Thameshead

CASPER EXTERIOR



**- A cast aluminium LED amenity exterior luminaire
available with various diffuser options**

- Available in LED or Fluorescent

- Tridonic CLE boards providing lumen outputs from 1420-3100lm
 - 5 year system warranty for LED
 - Colour Temperatures: 3000k - 4000k
 - Fluorescent: 28w - 38w 2D
22w - 55w T5c
 - Available with Dimming (1-10V/SDIM/DALI)
 - Available with Emergency (ME3/-ST/-PRO)
- Available with a Microwave Presence detector (MW)
 - Die cast aluminium body
 - Rated IP65
 - Colour: Black/ Silver/ White
 - Polycarbonate opal diffuser
 - Diffuser: Grille/Halo/Hood
 - Dimensions:
Ø351mm x 130mm

Reference Number	Lumen Output	Colour Temperature		Driver Options				Attachments		Emergency Option		
		3000K 2800h	4000K 2800h	STD	SDIM	DALI	CDR	HD	HL	ME3	ME3-ST	ME3-PRO
MICASP/LED/9W/	1420	*	*	*	*	*	*	*	*	*	*	*
MICASP/LED/14W/	1950	*	*	*	*	*	*	*	*	*	*	*
MICASP/LED/15W/	2250	*	*	*	*	*	*	*	*	*	*	*
MICASP/LED/23W/	3100	*	*	*	*	*	*	*	*	*	*	*



Uxbridge College



Brimsgate Primary School



Brambletye School



Christ The Saviour Primary School

MIEX & MIEX2 EMERGENCY



- MIEX



- MIEX2

- A surface mounted or recessed exit sign

- Available in LED or Fluorescent

- 3W LED

- 8W T5 Fluorescent

- Body constructed from sheet steel

- Powder coat finish: White/ Chrome/ Brass

- Viewing distance: 36 metres

- Available with all arrow legends

- Weight: 2.20 - 2.90kg

- Emergency Options:

Three Hour Maintained (ME3)

Three Hour Non Maintained (NM3)

Self Test (ME3-ST)

PRO (ME3-PRO)

- Dimensions:

200 x 385 x 65mm (MIEX)

240 x 410 x 155mm (MIEX 2)

Reference Number	Lamp & Wattage		Body Options			Legend Options				Double Sided (DS)	Emergency Options					
	3W LED	8W T5	WH	BR	CH	AU	AD	AL	AR		ME3	NM3	CB	MO	ME3-ST	ME3-PRO
MIEX/LED	•		•	•	•	•	•	•	•	•	•	•	•	•	•	•
MIEX/T5		•	•	•	•	•	•	•	•	•	•	•	•	•	•	•

MIEX & MIEX2 EMERGENCY



University of Hertfordshire



London House



Dukes Court



- A recessed or ceiling mounted, LED stand alone emergency fitting

- Quick and easy installation

- 3w LED

- Body Options: Round/ Square
- Lens Options: Open Area/ Corridor
- Recessed or Surface Mounted
- White as standard, silver also available

- Emergency Options:
 Three Hour Non Maintained (NM3)
 Self Test (NM3-ST)
 PRO (NM3-PRO)

- Dimensions:
 Circular Surface: Ø185 x 40mm
 Square Surface: 170 x 170 x 44mm

Circular Recessed: Ø50mm x 40mm

Ref. Number	Lamp	Mounting	Style		Lens Option		Finish		Emergency Options		
	LED		R	SQ	OA	CL	WH	SV	ME3	ME3-ST	ME3-PRO
MIR/EmLED/3W	1 x 3W	Recessed	•	•	•	•	•	•	•	•	•
MIS/EmLED/3W	1 x 3W	Surface	•	•	•	•	•	•	•	•	•